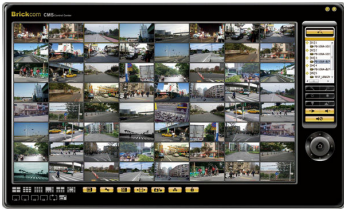


## PC-based NVR

### 64 Channels

### BRC-64



- **Manage up to 64 channels with group tree display**
- **Remote liveview up to 16 channels**
- **Video Wall**
- **PTZ control by Joystick**
- **Supports 1, 4, 9, 8, 10, 13, 16, 25, 36, 49, 64 window layout**
- **Supports megapixel MPEG-4 / H.264 / MJPEG codec compression format**
- **Supports different frame rate viewing on live view and recording**
- **Digital zoom on live view and playback**
- **Continuous, Schedule, Motion, Alarm Recording Options**
- **Search video clips by date, time and event**
- **Time-based search bar**
- **Smart Motion Detection**
- **E-Map Monitor and Event Alert**
- **Smart Camera Search**

The Brickcom BRC64 is an advanced PC-based NVR that allows users to manage up to 64 Brickcom IP cameras for live viewing and video recording. With the support of Mega-pixel resolution and H.264 compression, it uses less bandwidth while offering the optimal image viewing and recording quality.

Designed for flexibility and user-friendliness, the BRC64 has many features which enable easy setup and management of the entire IP surveillance system. The E-MAP gives users a full outline of the monitored areas and the "Smart Camera Search" feature makes it possible to gain instant access to any Brickcom IP camera on the specific site. "Smart Motion Detection" and extensive event configuration work together to make an effective IP system. Support for viewing and recording at different frame rates is available for efficient use of disk space. Flexible recording options include manual, event-triggered, scheduled or continuous.

With the help of the Brickcom BRC64 and its IP cameras, users can quickly build a secure IP surveillance system.

## BRC64

### Product Name

PC-based NVR

### Model Number

Brickcom BRC64

### Cameras

Add Camera : Manual / Smart Camera Search  
Max. Channels : 64

### E-Map

E-Map configuration and management

### Video & Audio

Video Compression : MJPEG/MPEG-4 Part 2/H.264  
Resolution : QCIF/CIF/FD1/MegaPixel/Up to 3Mega  
Max. Frame Rate : 360fps @ Mega Pixel  
Audio Compression : G.711, G.726, ADPCM, AAC

### Live View

Split Screen : 1/4/8/9/10/13/16/25/36/49/64  
Video Wall : Live matrix, Event display, Playback, E-Map  
Digital Zoom : supported  
Drag and drop operation : supported  
Sequence Mode : Sequence All / Manually Selected  
Remote Live View : for IE Browser, up to 16 channels  
PTZ control : Joystick supported

### Events

Event Actions : Sound Alarm  
Event Recording : Post Event Settings  
Auto reboot system : per cycle

### Logs

Log Types : Event / Alarm Access

### User Management

Management: group privilege control (Max. Groups: 5)

### Multilingual

English (United States) 、 Deutsch ( German ) 、 Dutch 、  
Japanese 、 Portuguese 、 Russian 、 Chinese ( Simplified ) 、  
Spanish 、 Chinese ( Traditional ), Thai

### Playback

Playback Controls : Play / Pause / Stop / Forward / Reverse  
/ Speed Adjust /Frame by Frame  
Digital Zoom : supported  
Video Clip Search : Search video clips by date, time, or  
channel  
Snapshot format : BMP, JPG  
Export Video : Export Playback Videos to Local Computer  
in AVI Format

### Recording

Recording Mode : Manual / Continuous / Scheduling / Event  
Schedule Recording : Manual Select / Weekly Mode  
Event Recording : by motion detection / digital input  
Post-Event Recording : 10 ~ 600 seconds  
Retain recorded video (days) : depend on the size of HDD

### Networks

Protocols : HTTP / DHCP / ARP / NTP / DNS/UPnP  
Streaming Protocols : RTSP over UDP, RTSP over TCP

## System Requirements

### Operating System:

Microsoft Windows XP  
Microsoft Windows VISTA  
Microsoft Windows 7

### Computer:

IBM PC/AT Compatible

### CPU:

Pentium 3GHz or faster

### Memory:

1024 MB or more

### HDD:

500GB

### Graphic Card:

ATI Radeon 1950, nVidia GeForce 9500GT (1024 MB) with  
DirectX9.0 or higher

### Monitor:

1024 x 768 pixels or more, 24-bit True color or better

### Network Interface:

Gigabit Network interface card must be installed

### Web Browser:

Microsoft Internet Explorer 6.0 SP2 or higher

### Adobe Reader:

Adobe Reader 8.0 or higher

\*The audio function will not work if a sound card is not installed in the PC. Audio may be interrupted depending on network traffic.

