

**Brickcom**

**Network Video Recorder**

**NR-04A**

**Quick Installation Guide**

Quality Service Group



## 1. Check Package Contents

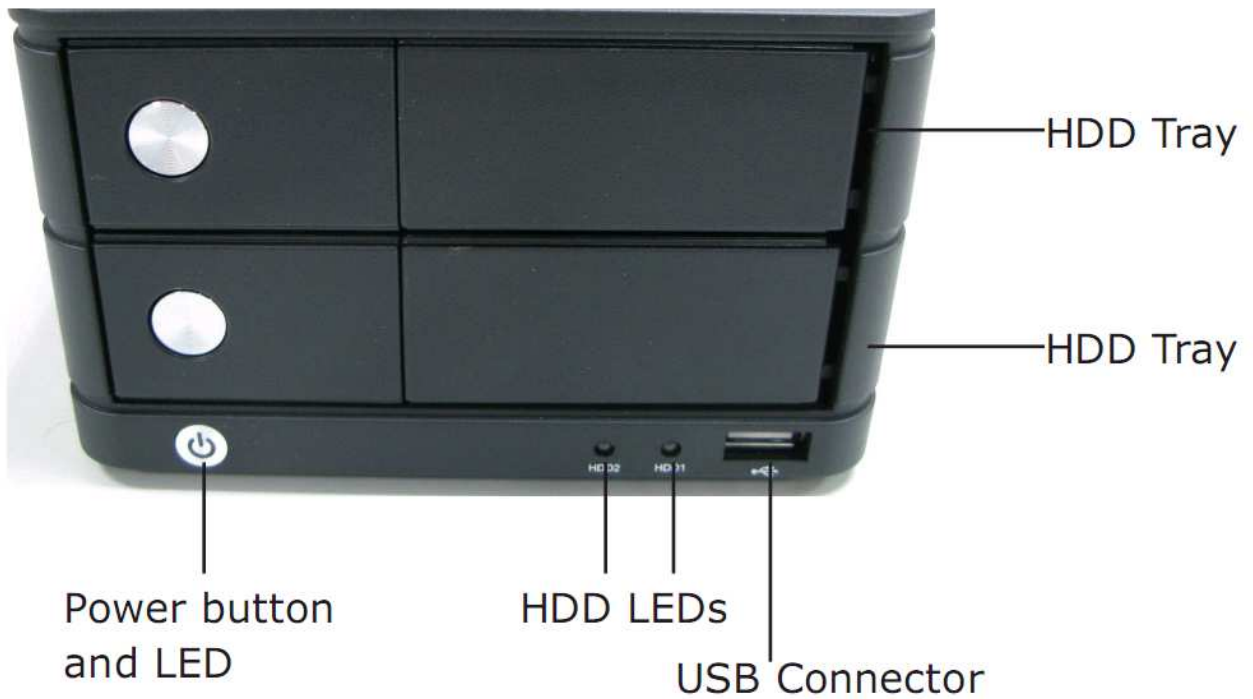
- **NR-04A Network Video Recorder**
- **Power Adapter ( Input 100-240V, Output +12V/4A )**
- **Ethernet Cable**
- **Printed Quick Installation Guide**
- **Printed Warranty Card**
- **CD-ROM ( Quick Installation Guide, User's Manual, Setup Wizard )**



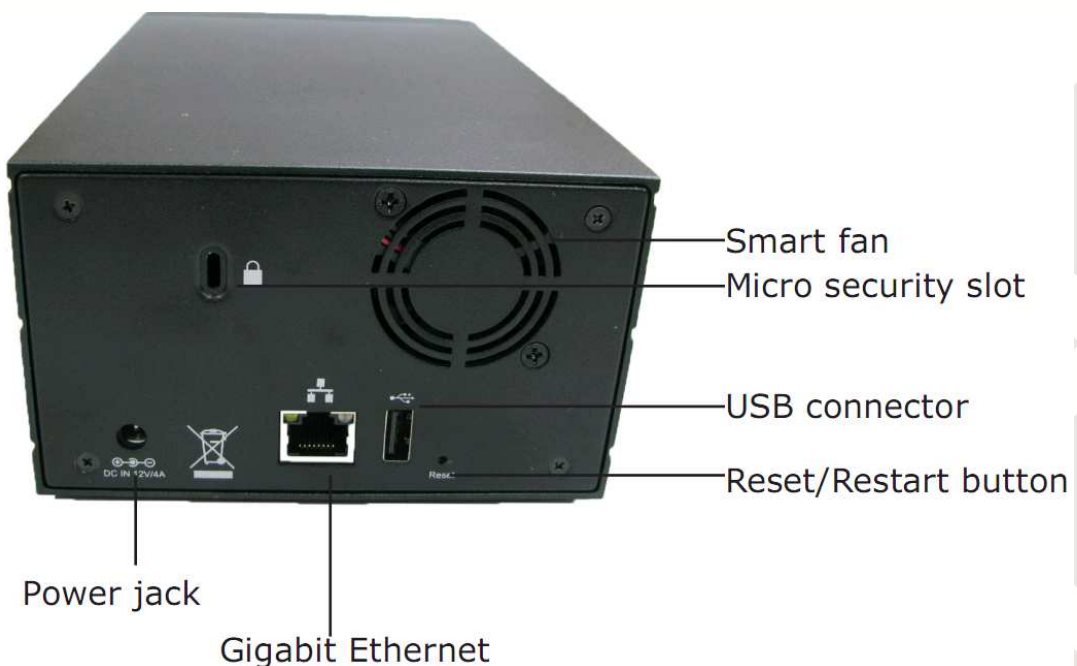


## 2. Device Description

### Hardware Illustration (Front)



### Hardware Illustration (Rear)





## 3. Hardware installation

1. Push the silver button to release the HDD tray



2. Pull out the HDD tray



3. Place the HDD on the tray and secure the HDD with the screws at the bottom (as illustrated)



4. Push the tray back in the unit and press down the black bar to secure the tray





## 4. System Requirements

The following are the minimum system requirements for a system to operate the NR-04A.

### Operating System

Microsoft Windows 2000 Professional  
Microsoft Windows XP Professional (32 bit)  
Microsoft Windows Server 2003 (32 bit)  
Microsoft Windows 7 (32 bit)

### Browser

Microsoft Internet Explorer 7 or above

### CPU

Minimum Intel Core 2 Duo @ 2.4GHz or higher

### RAM

Minimum 1 GB of RAM, 2GB or above is recommended

### Network

Minimum 10/100 Ethernet (Gigabit Ethernet is recommended)

### Graphics Adapter

AGP or PCI-Express, minimum 1024x768, 16 bit colors.

\*Note: It is highly recommended to use a graphics adaptor which provides higher than 1024 x 768 resolution in order to experience the full benefits of the software.

- *Make sure the display DPI setting is set to the default 96DPI*
- *To set DPI value, right-click on the desktop, choose Settings >> Advanced >> General*

### CD-ROM Drive

It is necessary to read the operating instructions in the provided CD-ROM.

### Adobe Reader

It is necessary to read the operating instructions in the provided CD-ROM.

The audio function will not work if a sound card is not installed in the PC. Audio may be interrupted depending on network traffic.



## 5. Connecting to the NR-04A

There are two methods for setting up the network connection:

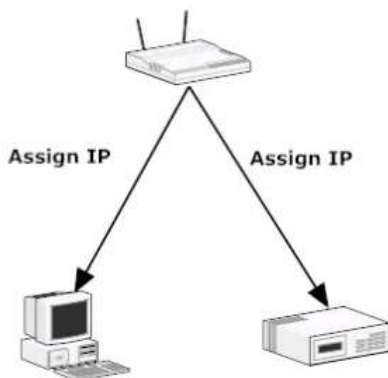
- If the NR-04A is added to a network with a DHCP server, connect to the NR-04A using the “**Setup Wizard**”.
- If the NR-04A is added to a network without a DHCP server or it is being accessed directly, **connect to the NR-04A using its default IP address.**

### Using the Setup Wizard

If the NR-04A is added to a corporate network or a local area network where a DHCP server is already present, install the “Smart Device Search” utility onto a computer that is connected to the network. This utility is available on the provided CD. Once the utility has been installed, locate the NR-04A using the IP address assigned to the NR-04A by the top-level DHCP server.

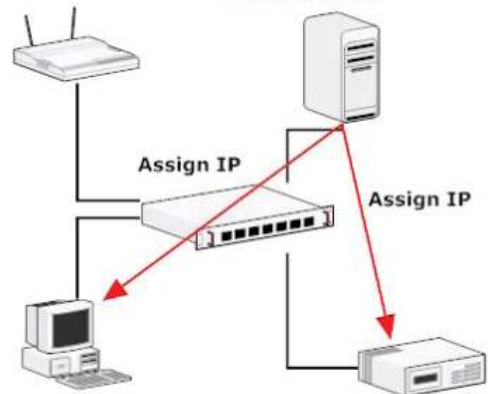
1.

Network gateway as the DHCP server

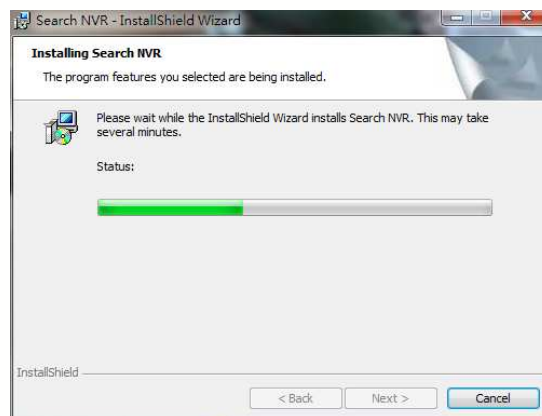


2.

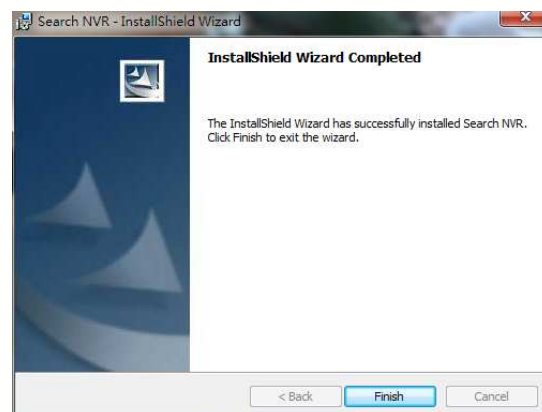
A separate DHCP server in the network



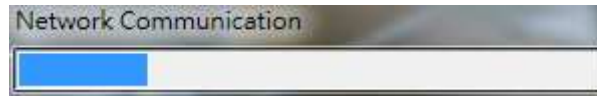
1. To begin, launch the “Setup Wizard” from the CD and proceed with the installation.



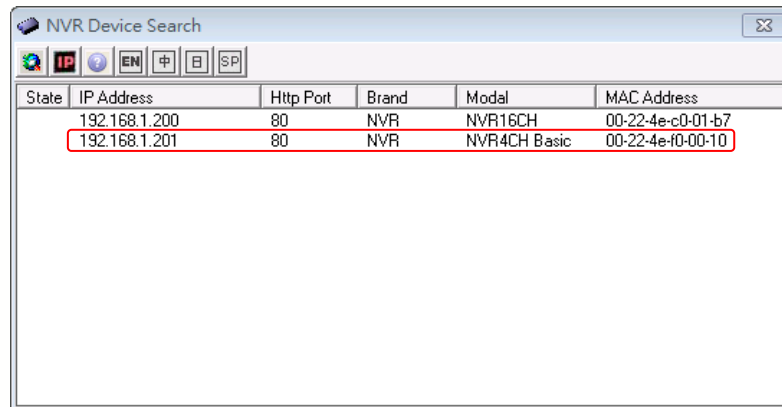
2. Once the installation is complete, click “Finish” and launch the NVR Search.



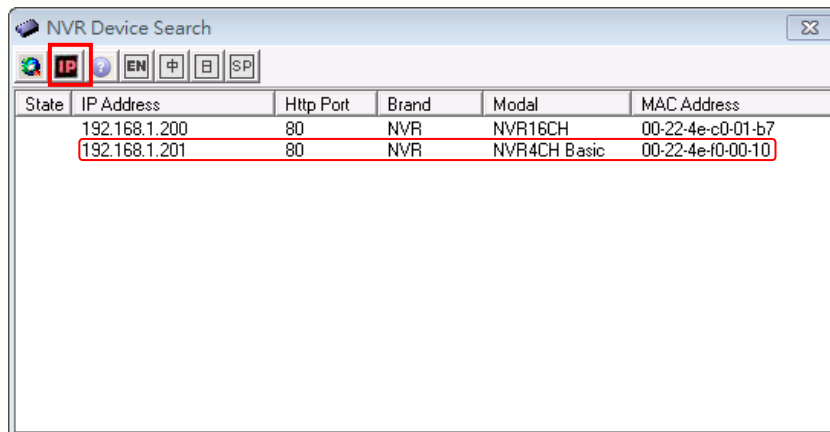
3. The search should start automatically and the status should be displayed.



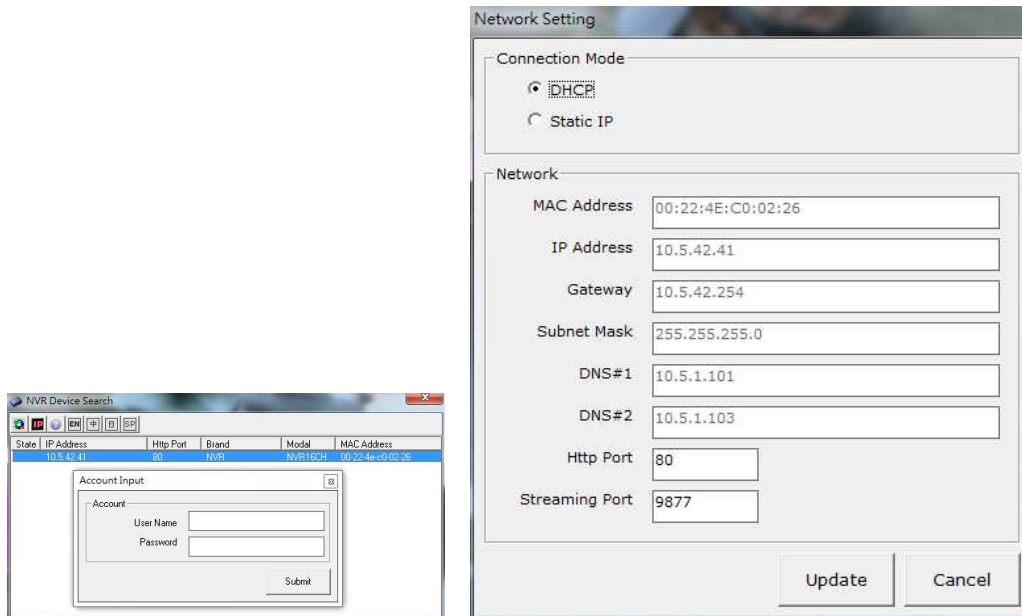
4. The utility will locate the NR-04A and display its IP address. Double-click to access the NR-04A. The NR-04A web administration page will automatically open in the default web browser.



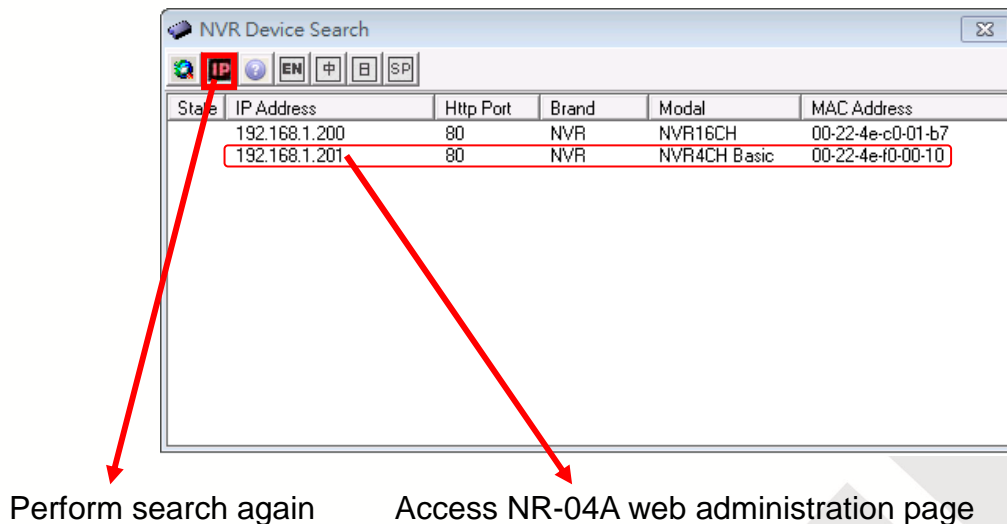
5. The NR-04A IP address can be changed by clicking on the button highlighted below.



- The user will be prompted to enter the NR-04A login information before being allowed to change the device's IP address. The default username and password is admin/admin.



- To search again for the NR-04A, click on the button highlighted below. To access the NR-04A's web administration page, double-click on any of the search results.



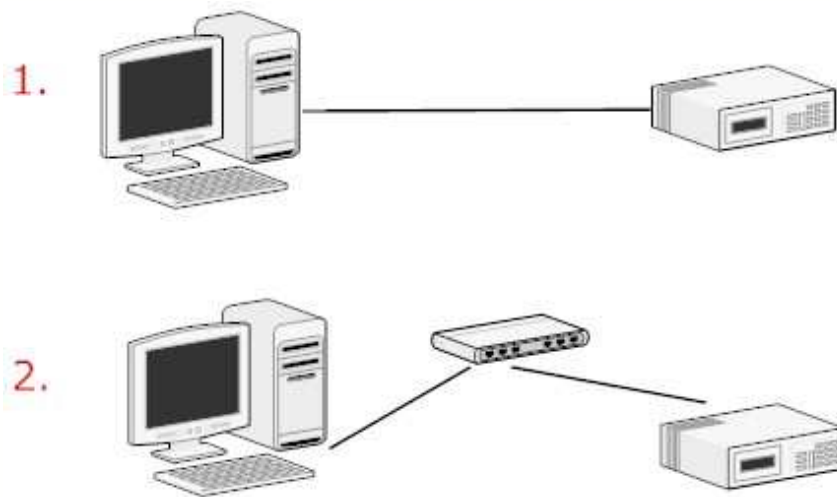
- When accessing the NR-04A's web administration page, the user will be prompted for the NR-04A username and password. For first time use, the default username and password are **admin/admin**. Enter the username and password and click "OK" to continue.



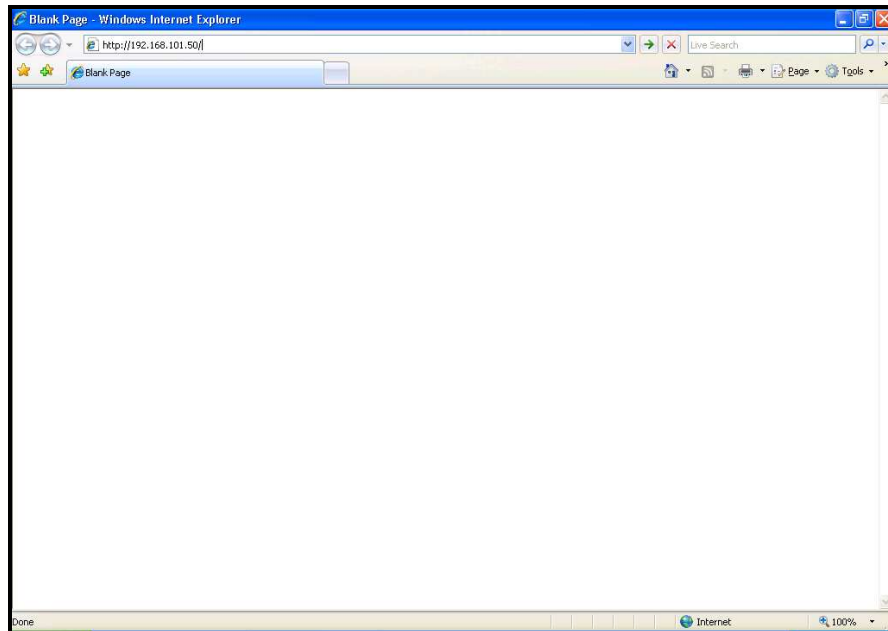
## Access NR-04A with its Default IP Address

The NR-04A is preconfigured with a static IP address: **192.168.101.50**. However, this IP address will only be used when there is no DHCP server present on the network. If there is no server, the NR-04A will turn on its DHCP server and act as the DHCP server for the network. Users have two options for connecting to the NR-04A:

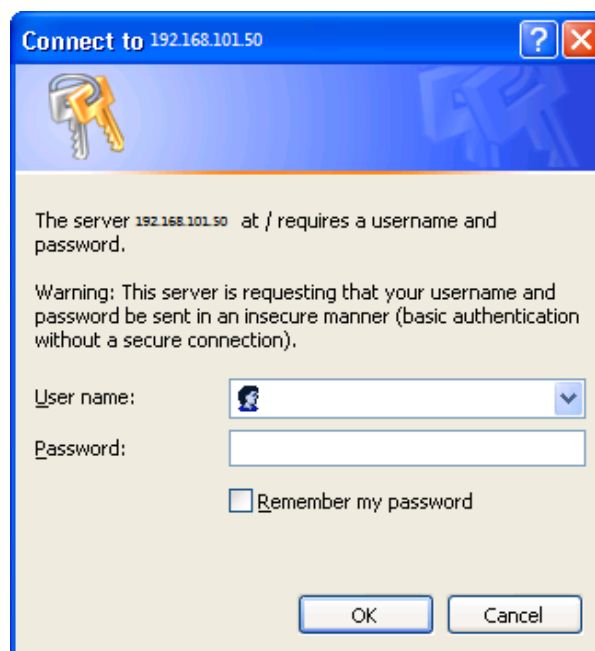
1. Connect the PC directly to the NR-04A using a crossover CAT5 Ethernet cable
2. A PC can use a switch or hub to connect to the NR-04A over the network.



1. Once the PC is connected to the NR-04A, open a web browser and enter the IP address: 192.168.101.50. The computer will automatically connect to the NR-04A.



2. The user will be prompted to enter the NR-04A's username and password. The default username and password are **admin/admin**. Click "OK" to continue.





## 6. Set up Password

The default login username and password are admin/admin. To change the password of the admin account, go to “Setup” → “System Configurations” → “User Account”. Click on the “admin” account in the account list and press the “edit” button to change the password. The administrator’s username cannot be changed from “admin”. Finally, click “Apply” to save the changes.

**NVR Setup**

- System Configuration
  - Network Setup
  - Time and Date
  - Users Account**
  - Group Privilege
  - Disk Setup
- Channel Configuration
- Event Configuration
- Recording Configuration
- System Options

### User Account Setting

User Name	Group	Description
admin	admin	
GTKMan	group1	

#### Modify User

User Name:  Only A-Z, a-z, 0-9 and \_.@ are allowed

Password:

Confirm Password:

Company:  (Optional)

Department:  (Optional)

Telephone:  (Optional)

Mobile:  (Optional)

E-Mail:  (Optional)

Group:

Language:



## 7. Add a Camera

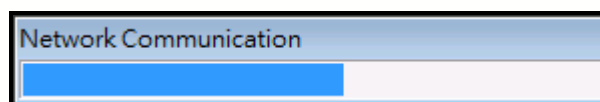
To add a camera to the NR-04A, go to “Setup” → Channel Configuration → Channel Setting. Users have two options for adding a camera: automatically search the network or manually add a camera.

### 1. Automatic Search for Cameras on the network:

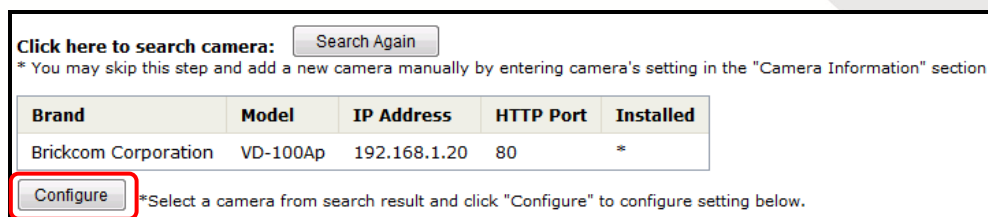
- a. Click the “Search” button to perform the camera search. The user may be prompted to install the Active Control component in order for the search function to operate properly. Click “Install” to install the component.



- b. Once the Active Control component has been installed, the NR-04A will search for available cameras on the network. The status will be displayed.



- c. The available camera on the network will be listed. Select a camera from the list and press “Configure.”



d. The selected camera's information will be displayed in the "Camera Information" section. Enter its username and password. Select the channel ID and name the camera.

Brand	Model	IP Address	HTTP Port	Installed
Brickcom Corporation	VD-100Ap	192.168.1.20	80	*

\*Select a camera from search result and click "Configure" to configure setting below.

**Add New Channel:**

Channel ID:

Channel Name:

Group:

IP Address:

User Name:

Password:

HTTP Port:

## 2. To Add a Camera Manually:

a. Select the button to add a camera from the NR-04A GUI. Enter the camera's IP address and information into the "Camera Information" manually.

**Add a new Camera:**

2.   Once you fill out above information, click "Detect" to retrieve camera settings

1.  Channel ID:  Camera Name:  Group:  IP Address:  User Name:  Password:  HTTP Port:

Enter manually

3. Click on “Detect” to establish the connection between the NR-04A and the camera. If the connection is successful, the camera’s detailed information will be displayed as shown below:

Once you fill out above information, click "Detect" to retrieve camera setting

**Additional Camera Information**

Video Port: 554

Format: MJPEG

Resolution: 1280x800

Frame Rate: Full

Quality: 3

Record:  Continuous

Preview

Add Cancel

Users can adjust the camera’s video format, frame rate, resolution and live video quality. When finished, click “Add” to finalize the connection between the NR-04A and the camera.





## 8. Recording Configurations

The “Recording Configurations” allows users to control how and when video is recorded. Configuring the recording schedule allows for users to gain the full benefits of the NR-04A because they will be able to record video only necessary and at the appropriate frame rate to utilize memory space.

### General Settings

Users can use the “General Settings” to define:

- Pre-Alarm/Post-Alarm recording length
- Recording frame rate
- Enable/disable different recording types on different cameras

<ul style="list-style-type: none"> <li>⊕ System Configuration</li> <li>⊕ Channel Configuration</li> <li>⊕ Event Configuration</li> <li>⊖ Recording Configuration                             <ul style="list-style-type: none"> <li><u>General Setting</u></li> <li>Schedule Recording Setting</li> </ul> </li> <li>⊕ System Options</li> </ul>	<b>Recording Buffer</b>			
	Pre-Alarm Buffer: <input type="text" value="3"/> Seconds			
	Post-Alarm Buffer: <input type="text" value="30"/> Seconds			
	<b>Recording Frame Rate</b>			
	1	2	3	4
Continuous	Full ▾	I Only ▾		
Schedule	I Only ▾	I Only ▾		
Event	Full ▾	Full ▾		
Manual	Full ▾	Full ▾		
<b>Recycling</b>				
<input checked="" type="checkbox"/> Enable Recycle				
<b>Camera Recording Setting</b>				
	1	2	3	4
Continuous	<input checked="" type="checkbox"/>	<input checked="" type="checkbox"/>		
Schedule	<input type="checkbox"/>	<input type="checkbox"/>		
Event	<input type="checkbox"/>	<input type="checkbox"/>		

The Recording Buffer allows users to set the pre-alarm and post-alarm buffer. These buffers will determine how much video will be recorded before and after an alarm has been triggered. The Pre-Alarm Buffer range is from 0 to 3 seconds and the Post-Alarm Buffer range is from 5 to 30 seconds.

Recording General Settings	
Recording Buffer	
Pre-Alarm Buffer:	<input type="text" value="3"/> Seconds
Post-Alarm Buffer:	<input type="text" value="30"/> Seconds

Recording Frame Rate allows users to set different frame rate for each recording type and camera. The recording types include continuous, schedule, event, and manual. Use the drop-down menu and select one of the predefined frame rates. The predefined frame rates include 1, 5, 10, 15, 20, and full.

Recording Frame Rate				
	1	2	3	4
Continuous	Full ▾			
Schedule	I Only ▾			
Event	Full ▾			
Manual	Full ▾			

Camera Recording Setting allows users to enable continuous, schedule, or event recording on any channel.

Camera Recording Setting				
	1	2	3	4
Continuous	<input checked="" type="checkbox"/>			
Schedule	<input type="checkbox"/>			
Event	<input type="checkbox"/>			



## 9. Schedule Recording Setting

Users can use Schedule Recording Settings to define the time range of the scheduled recording for all channels.

- System Configuration
- Channel Configuration
- Event Configuration
- Recording Configuration
  - General Setting
  - Schedule Recording Setting
- System Options

**Schedule Recording Settings**

Channel:

**Schedule Table**

	0	1	2	3	4	5	6	7	8	9	10	11	12	13	14	15	16	17	18	19	20	21	22	23
Sunday																								
Monday																								
Tuesday																								
Wednesday																								
Thursday																								
Friday																								
Saturday																								

**Quick Configuration**

Days:
   
 Sun  Mon  Tues  Wed  Thur  Fri  Sat  All

Duration:
   
 All day
   
 During
   
 Start Time:  : 
 End Time:  :

### To configure a schedule recording

1. Select a camera from the “Camera” drop-down menu.

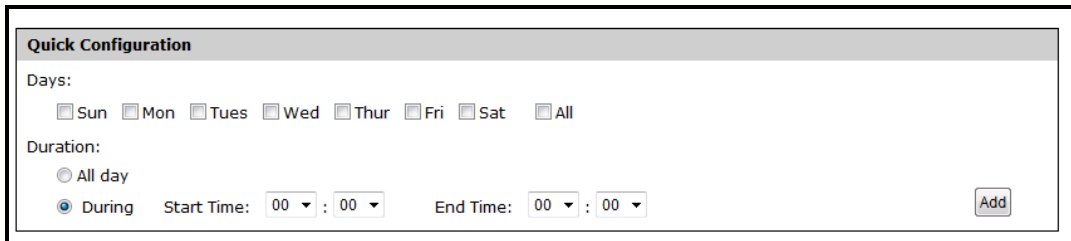
Channel:

2. Use the Schedule Table to specify times for scheduled recordings. Each cell represents fifteen minutes of time. Click one or more boxes to omit consecutive recording.

**Schedule Table**

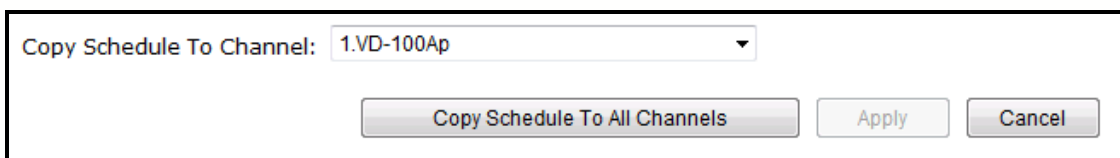
	0	1	2	3	4	5	6	7	8	9	10	11	12	13	14	15	16	17	18	19	20	21	22	23
Sunday																								
Monday																								
Tuesday																								
Wednesday																								
Thursday																								
Friday																								
Saturday																								

3. Instead of the Schedule Table, users can use the Quick Configuration to define the recording time range. Check the days to record and specify the duration by choosing either “All Day” or enter a start and end time for a specific recording duration.



The screenshot shows a dialog box titled "Quick Configuration". It has two sections: "Days" and "Duration". Under "Days", there are checkboxes for Sun, Mon, Tues, Wed, Thur, Fri, Sat, and All. Under "Duration", there are two radio buttons: "All day" and "During". The "During" option is selected. To the right of "During" are two time pickers: "Start Time: 00 : 00" and "End Time: 00 : 00". An "Add" button is located at the bottom right of the dialog box.

4. Select the “Copy to” option to duplicate the recording schedule to another camera.



The screenshot shows a dialog box titled "Copy Schedule To Channel". It features a dropdown menu with the text "Copy Schedule To Channel: 1.VD-100Ap". Below the dropdown are three buttons: "Copy Schedule To All Channels", "Apply", and "Cancel".

