

**Brickcom**

Wireless Dual-Band N Router  
**DWRT-600N**  
Quick Installation Guide  
Quality Service Group



## Package Contents

- Brickcom Dual-Band Wireless N Router
- Ethernet cable
- Power Adapter
- Quick Setup Guide



## Device Description

### <Front LEDs>



#### Power, Wireless

- Lights when the router is powered on and wireless is enabled.
- Flashes when your router is sending or receiving data over the network



#### Camera, WPS (Wi-Fi Protected Setup)

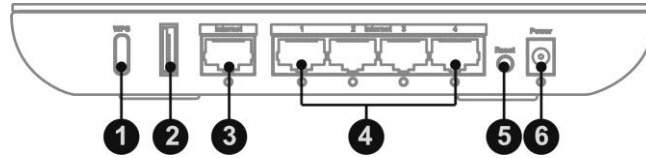
- Lights when your router is connected with network cameras.
- Lights when your router is setting up using WPS. Your router supports one WPS session at a time so wait until the LED stops flashing before setting up another WPS device.
- Turns off if there is an error during the WPS setup process. Make sure your device(s) support WPS, and then try again.



#### WAN

- Lights when there is a working Internet connection.
- Flashes to indicate network activity over the Internet port.

## <Rear Panel Connections>



1. WPS (Wi-Fi Protected Setup) Button— WPS allows users to automatically configure wireless security for their wireless network if they are connecting devices that support WI-FI Protected Setup.
2. USB— Connect a USB storage device to this port
3. Internet— Connect a high-speed cable or DSL Internet service to this port.
4. Ethernet 1, 2, 3, 4— Use these ports to connect Ethernet devices to the router or use an Ethernet cable to connect the router to computers on the wired network. The LED under the port will light up when the router is connected to an Ethernet device. The LED will flash when there is network activity over that port.
5. Reset— Press and hold for approximately ten seconds to reset the router to factory default settings. If any custom settings have been applied to the router, including a login name and password, they will be erased and replaced with the factory default settings.
6. Power— Connect the power adapter to this port. The LED under the port will light up when the router is on. The LED will flash when the router goes through a self-diagnostic test during boot-up.



## Setting Up Brickcom Router

### Equipment needed

- Your Brickcom Router, Power Adapter, and Ethernet cable (included)
- High-speed Internet connection and access to your Internet modem (Users should contact their local provider assistance is needed)
- Additional Ethernet cable (usually provided with the Internet modem)
- A computer Internet browser (such as Internet Explorer, Firefox, or Safari)

### Setup Steps

1. Unplug the power cable from the high-speed Internet modem.
2. Connect one end of the Ethernet cable (included) to the number 1 port

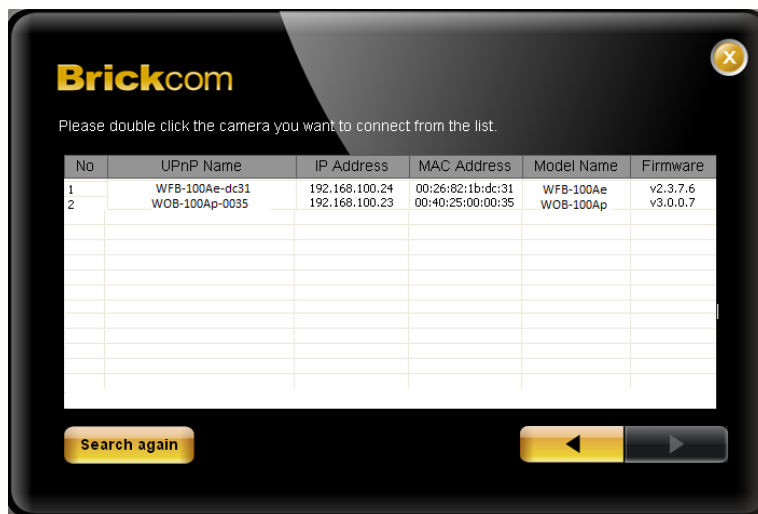




Follow these steps to quickly launch the camera's web-based live view page via the router.

### Setup Steps


1. Complete the installation of the Camera(s) and Access Point.
2. Launch EasyConfig and the Camera(s) on the network will appear on the survey list. Double click on the desired camera to connect.



**Note: Install EasyConfig from the Camera's supplied CD.**

3. Enter the username and password of the camera. The default username and password are "**admin/admin.**"
4. Follow the EasyConfig software to configure the camera's IP address settings and EasyLink™ function.
5. When the Camera IP address settings have been configured, the screen will either display a successful or failed connection message. If the connection failed, either try again or quit the installation. Click **<Live View>** to view the live video from the connected camera.



 **Note: If the Brickcom Camera is equipped dual band WiFi connectivity, the 5GHz would be higher priority than 2.4GHz.**