

Brickcom

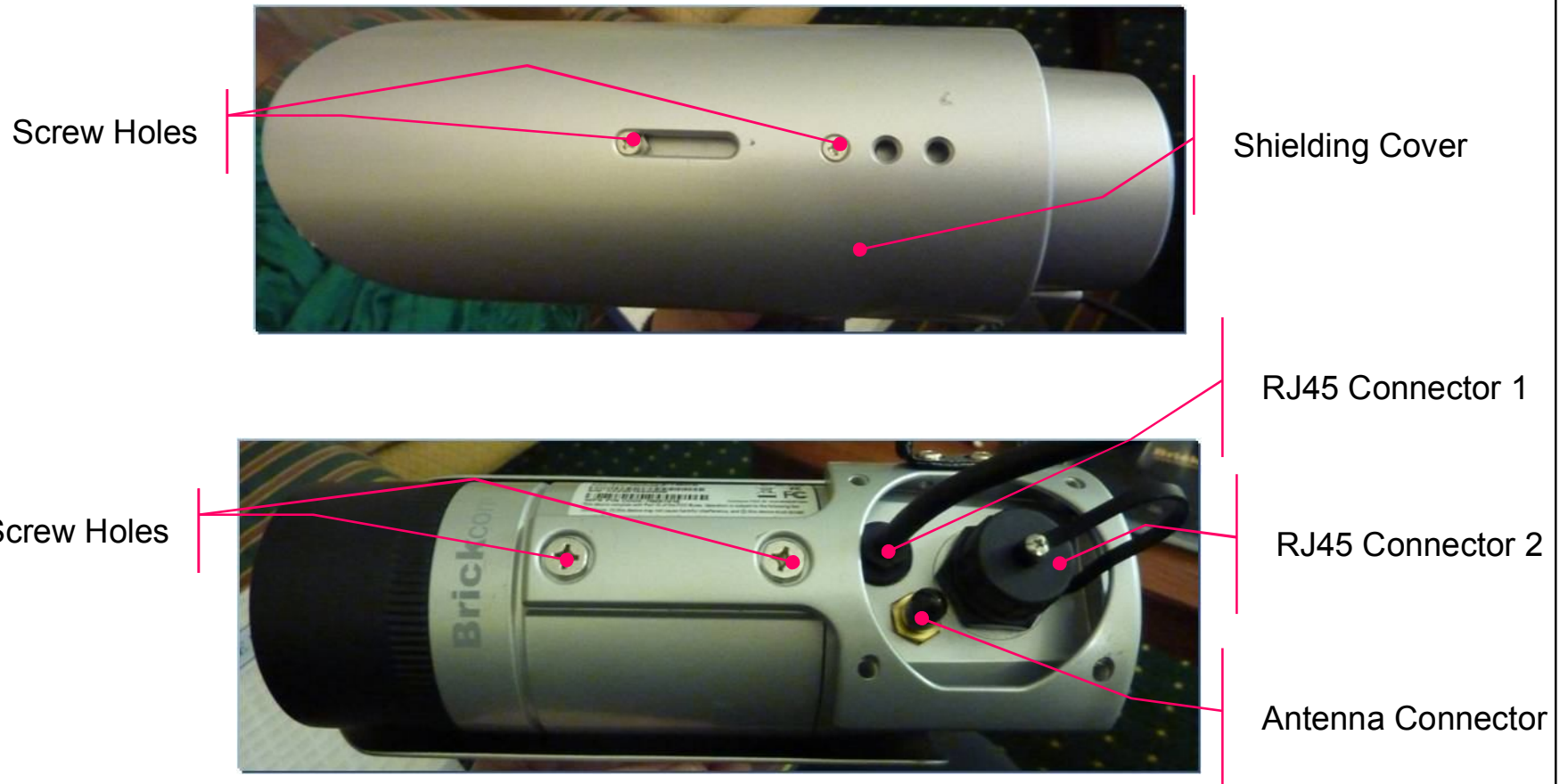
May 17, 2011

**Quick Installation Guide
for WOB-100Ap**

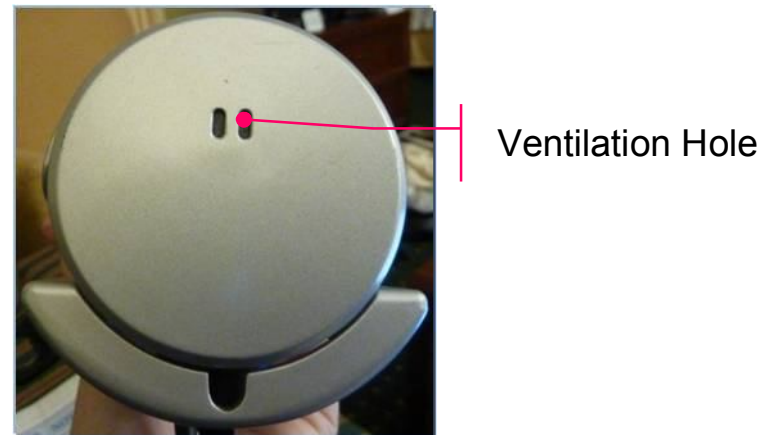
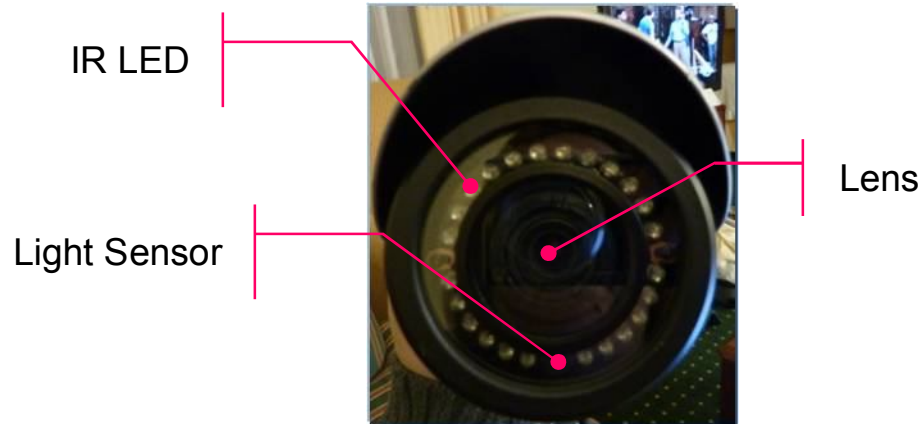
Things to Have Before You Start

- Brickcom WOB-100Ap
 - Username/Password: admin/admin
- Brickcom DWRT-600N Wi-Fi Simultaneous Dual-Band Router
 - Default IP address: 192.168.1.1
- Wi-Fi Antenna
 - GEM04-222008A: omni-directional antenna
 - GEM04-222060: directional antenna
- High-Power PoE Injector (POE30U)
- Brickcom Software Kit
 - Download page: <http://www.brickcom.com.tw/support/download.php>
- Computer
 - Intel Core 2 Duo@2GHz or above
 - RAM 1GB or above
 - Preferably with an nVIDIA/ATI stand-alone VGA card.
- Ethernet Cable

WOB-100Ap Camera Hardware



WOB-100Ap Camera Hardware



WOB-100Ap Wi-Fi Antenna: GEM04-222008A

- Connect the Wi-Fi antenna to the WOB-100Ap using the antenna cable. The Wi-Fi antenna doesn't need to face towards the DWRT-600N.



WOB-100Ap Wi-Fi Antenna: GEM04-222060

- Connect the Wi-Fi antenna to the WOB-100Ap using the antenna cable.
- The Wi-Fi antenna needs to face towards the DWRT-600N.



DWRT-600N Hardware

- Wi-Fi Simultaneous Dual-Band Router: DWRT-600N



LED Indicators



WPS Button

USB Port

WAN Ethernet Port

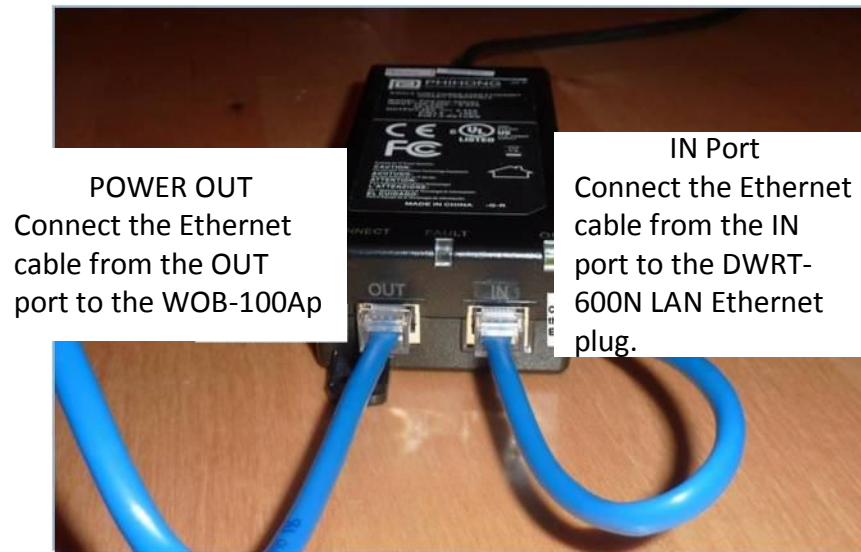
DC Power In
(12V 1.5A)

Reset Button

LAN Ethernet Ports

Connect PC & WOB-100Ap to DWRT-600N

- Connect an Ethernet cable from the WOB-100Ap to the OUT port on the high-power PoE injector.
- Connect an Ethernet cable from the IN port on the high-power PoE injector to the LAN Ethernet port on the DWRT-600N.
- Connect an Ethernet cable from the LAN Ethernet port on the DWRT-600N to your PC.



Connect the Ethernet cable from your PC and the high-power PoE injector to any of the DWRT-600N's four LAN Ethernet ports.

Brickcom Software Kit

- Includes EasyConfig, PC-NVR, User Manual, Quick Guide, etc.
- Language Support: English, Spanish, French, Deutsche, Japanese, Chinese, etc.
- Comes in a CD with the Brickcom IP camera. The CD supports Auto Run.
- Click **Install** to install the Brickcom Software Kit to your PC.



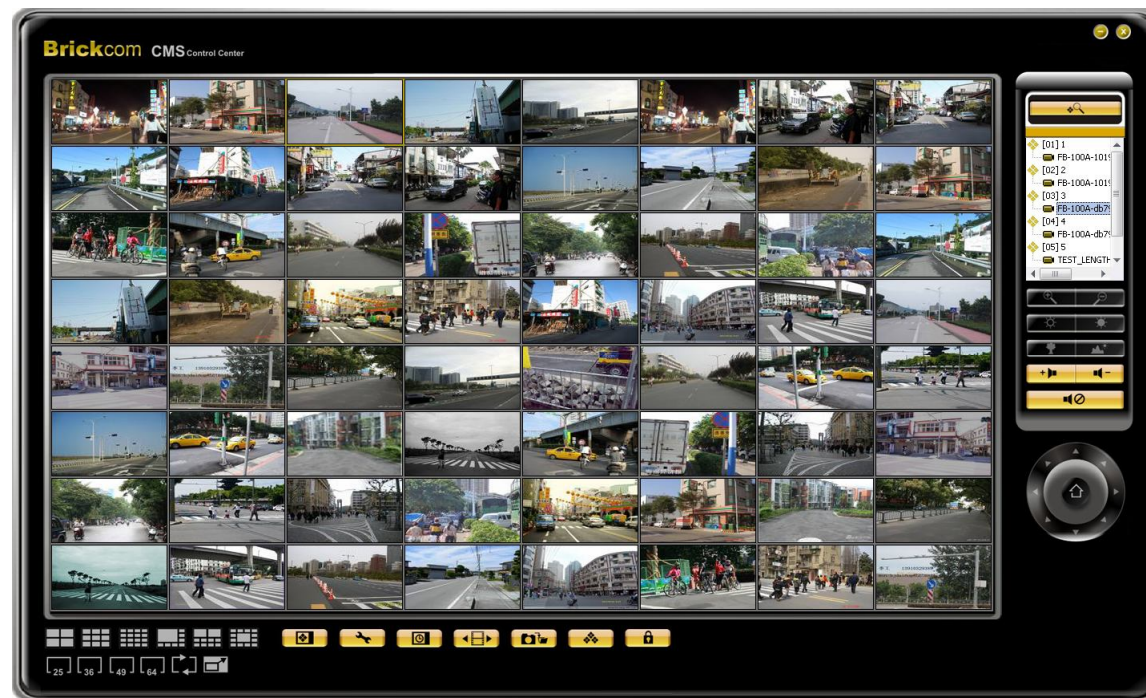
EasyConfig

- Use EasyConfig to discover and access the Brickcom IP camera.
 - **Simple Mode** allows the user to find the camera, connect to it and do the live view in just a few mouse clicks!
 - **Professional Mode** gives the user more control over the camera, such as
 - Detailed network configuration of the camera
 - EasyLink setting
 - Access to PC-NVR



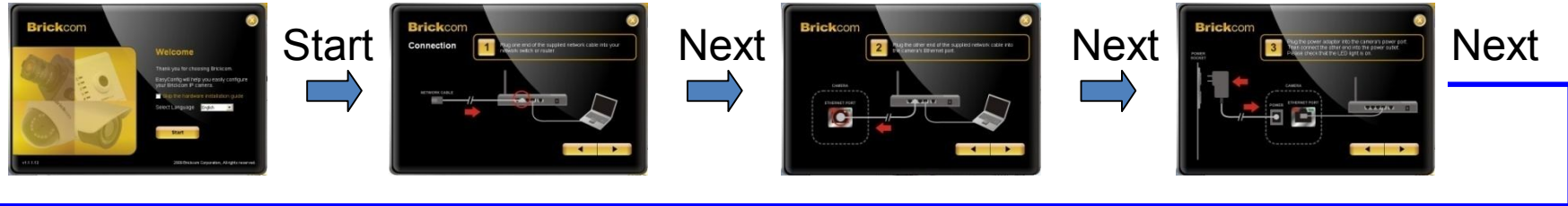
PC-NVR (BRC-64)

- Brickcom's free-bundled 64-channel recording software. No license fee.
- Included in the Brickcom Software Kit. The user manual is also included.
- Supports Windows XP, Vista and 7. Both the 32-bit version and 64-bit are supported.
- Supports simultaneous live view, recording and playback.



EasyConfig Workflow

Attention: Please connect your PC to the DWRT-600N's LAN Ethernet port before running EasyConfig.



Choose Simple Mode and click Next



Choose the camera and click Next



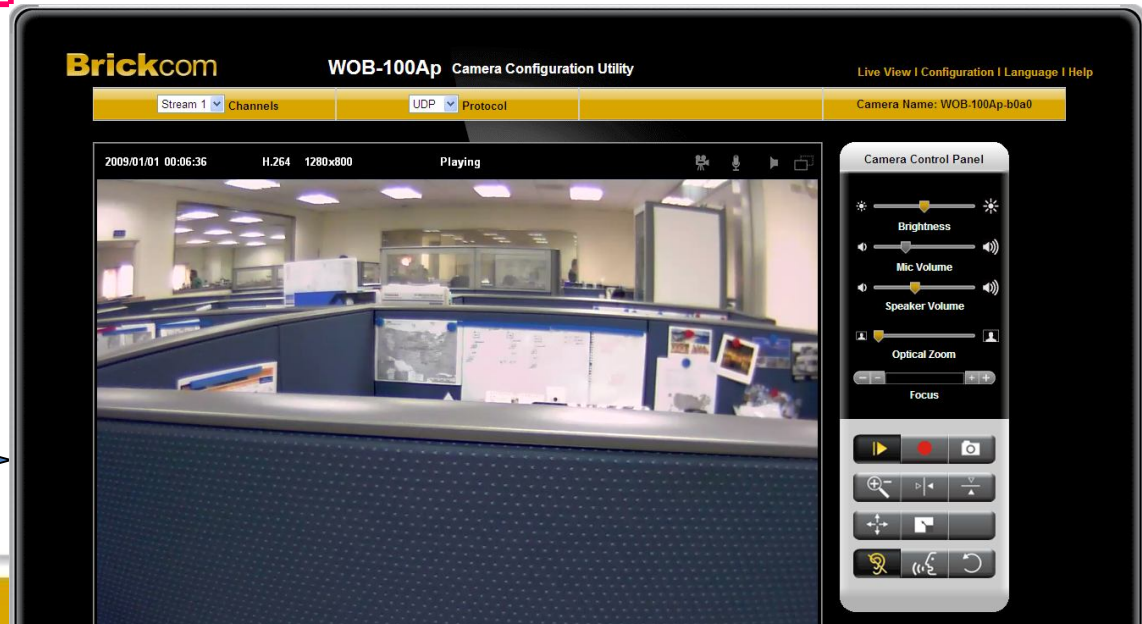
Choose Back to set up more cameras

Choose Live View



First-Time ActiveX Player Installation

Username: admin
Password: admin



Set Up Wi-Fi Connection

- Once connected to the WOB-100Ap's web UI, select **Configuration** from the right hand corner and **Wireless** from the left hand side menu.
- Select the **Site survey** button to scan for available networks.
- From the list of available networks, press the **Select** button of the SSID of the DWRT-600N.
- Click **Apply** to save the settings.
- When asked to unplug the network cable, disconnect the Ethernet cable connecting the WOB-100Ap to the DWRT-600N.
- After approximately one minute, the wireless connection will be established.

Wireless

Basic Settings | Advanced Settings | **Wi-Fi Protected Setup**

Network Name (SSID): Brickcom_IPCC5555

Security: WPA2-Personal

Encryption: AES

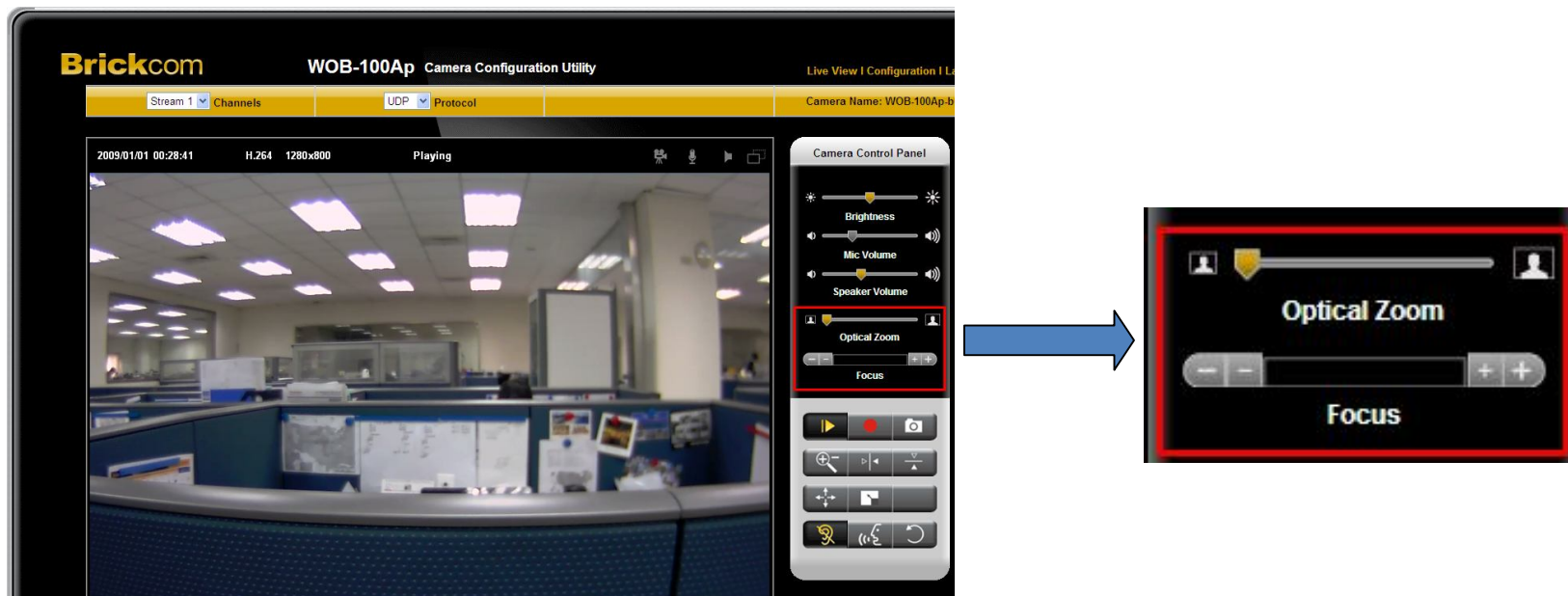
Shared Key: 1234567890 (8 to 63 characters)

SSID	Mode	Security	Channel	Signal	Type	Select
FAE_5	11a/n	NONE	44	23%	Infrastructure	<input type="button" value="Select"/>
MIS	11a	WEP	60	31%	Infrastructure	<input type="button" value="Select"/>
BRICK	11b/g/n	NONE	1	23%	Infrastructure	<input type="button" value="Select"/>
Brickcom_Osborne_Test_2.4GHz	11b/g/n	WPA2PSK/AES	3	31%	Infrastructure	<input type="button" value="Select"/>
Brickcom_2.4G test.	11b/g/n	NONE	6	26%	Infrastructure	<input type="button" value="Select"/>
Brickcom_Test_C	11b/g/n	WPA2PSK/AES	6	28%	Infrastructure	<input type="button" value="Select"/>



Notes

- The WOB-100Ap offers a Smart Focus feature that allows the motorized lens to be adjusted remotely through the web GUI on the live view page. The optical zoom and focus can be adjusted using the controls.



Notes

- The wireless distance between the DWRT-600N and WOB-100Ap varies with the environment.
 - With GEM04-222008A: up to 150ft (50m) line-of-sight.
 - With GEM04-222060: up to 300ft (100m) line-of-sight.
 - In a non-line-of-sight situation, the wireless performance will be impacted.
 - If a different Wi-Fi AP/router is used, the wireless performance will vary.
- Please close all other programs in order for the computer to have more system resources for viewing the video feed. It is recommended that the CPU usage be under 80%.



Brickcom, Your Best Partner.
Thank You



© Brickcom Technology Inc., All Rights Reserved. This document is for planning purposes only, and is not intended to modify or supplement any specifications or warranties relating to products of Brickcom Technology. Brickcom may make changes to specifications and descriptions at any time, without notice.

Brickcom